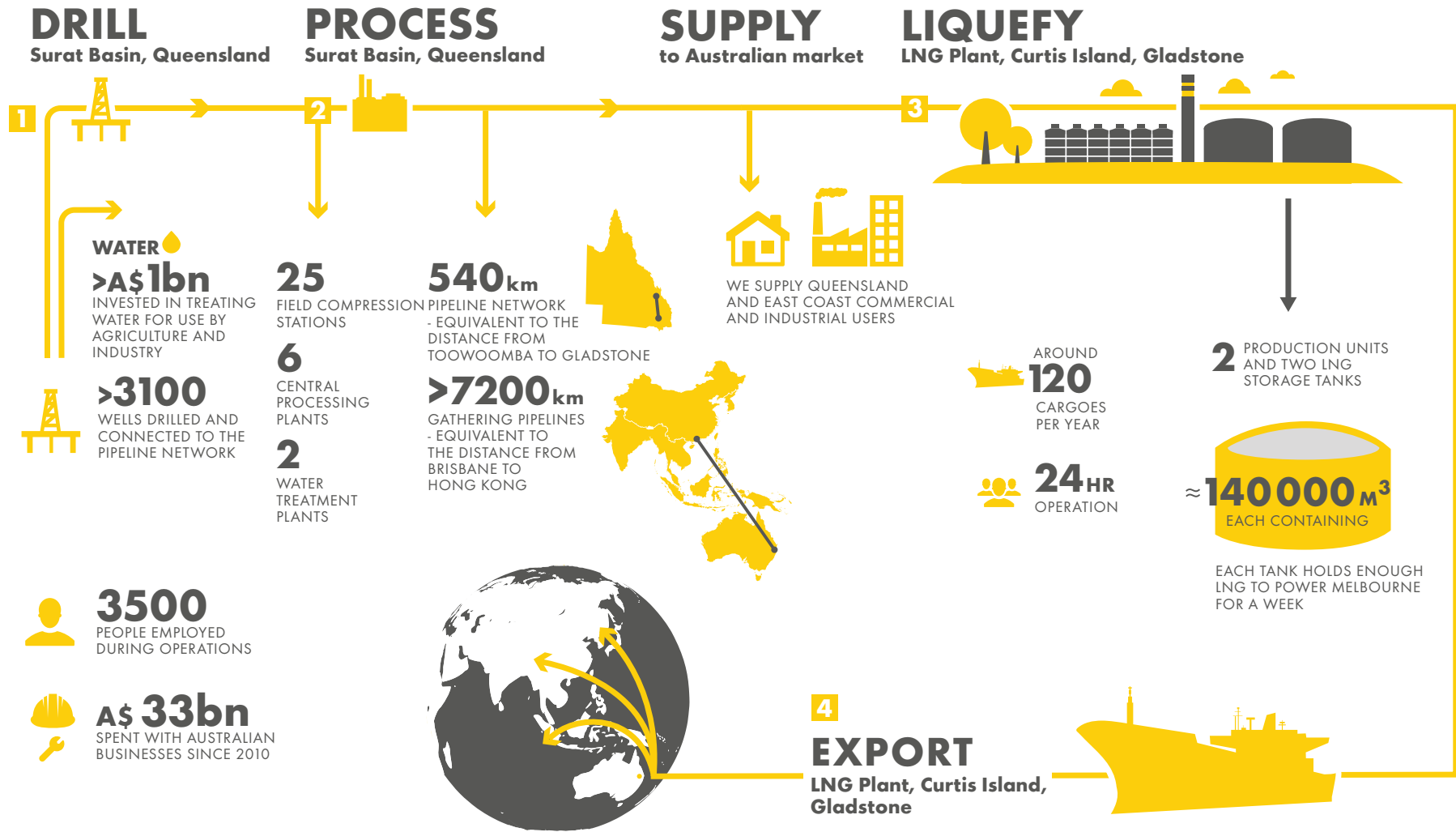




# QGC

# FROM GAS TO LIQUEFIED NATURAL GAS (LNG)



**WATER**  
**>A\$1bn**  
INVESTED IN TREATING  
WATER FOR USE BY  
AGRICULTURE AND  
INDUSTRY

**>3100**  
WELLS DRILLED AND  
CONNECTED TO THE  
PIPELINE NETWORK

**3500**  
PEOPLE EMPLOYED  
DURING OPERATIONS

**A\$ 33bn**  
SPENT WITH AUSTRALIAN  
BUSINESSES SINCE 2010

**25**  
FIELD COMPRESSION  
STATIONS

**6**  
CENTRAL  
PROCESSING  
PLANTS

**2**  
WATER  
TREATMENT  
PLANTS

**540km**  
PIPELINE NETWORK  
- EQUIVALENT TO THE  
DISTANCE FROM  
TOOWOOMBA TO GLADSTONE

**>7200km**  
GATHERING PIPELINES  
- EQUIVALENT TO  
THE DISTANCE FROM  
BRISBANE TO  
HONG KONG

WE SUPPLY QUEENSLAND  
AND EAST COAST COMMERCIAL  
AND INDUSTRIAL USERS

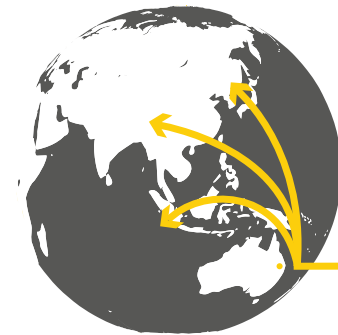
AROUND  
**120**  
CARGOES  
PER YEAR

**24HR**  
OPERATION

**2** PRODUCTION UNITS  
AND TWO LNG  
STORAGE TANKS

**≈ 140000 M<sup>3</sup>**  
EACH CONTAINING

EACH TANK HOLDS ENOUGH  
LNG TO POWER MELBOURNE  
FOR A WEEK



**EXPORT  
DESTINATIONS  
INCLUDE:**

CHINA, JAPAN, SOUTH KOREA, INDIA,  
SINGAPORE, MALAYSIA, THAILAND, UAE,  
PAKISTAN, MEXICO, JORDAN, KUWAIT, TAIWAN



1 LARGE STORAGE TANK  
HAS APPROXIMATELY  
THE SAME VOLUME AS  
1 LNG SHIP