

# Appendix E


## Geological cross sections



## **Appendix E: Geological Cross Sections**

**Rev [0]**

**[April 2012]**

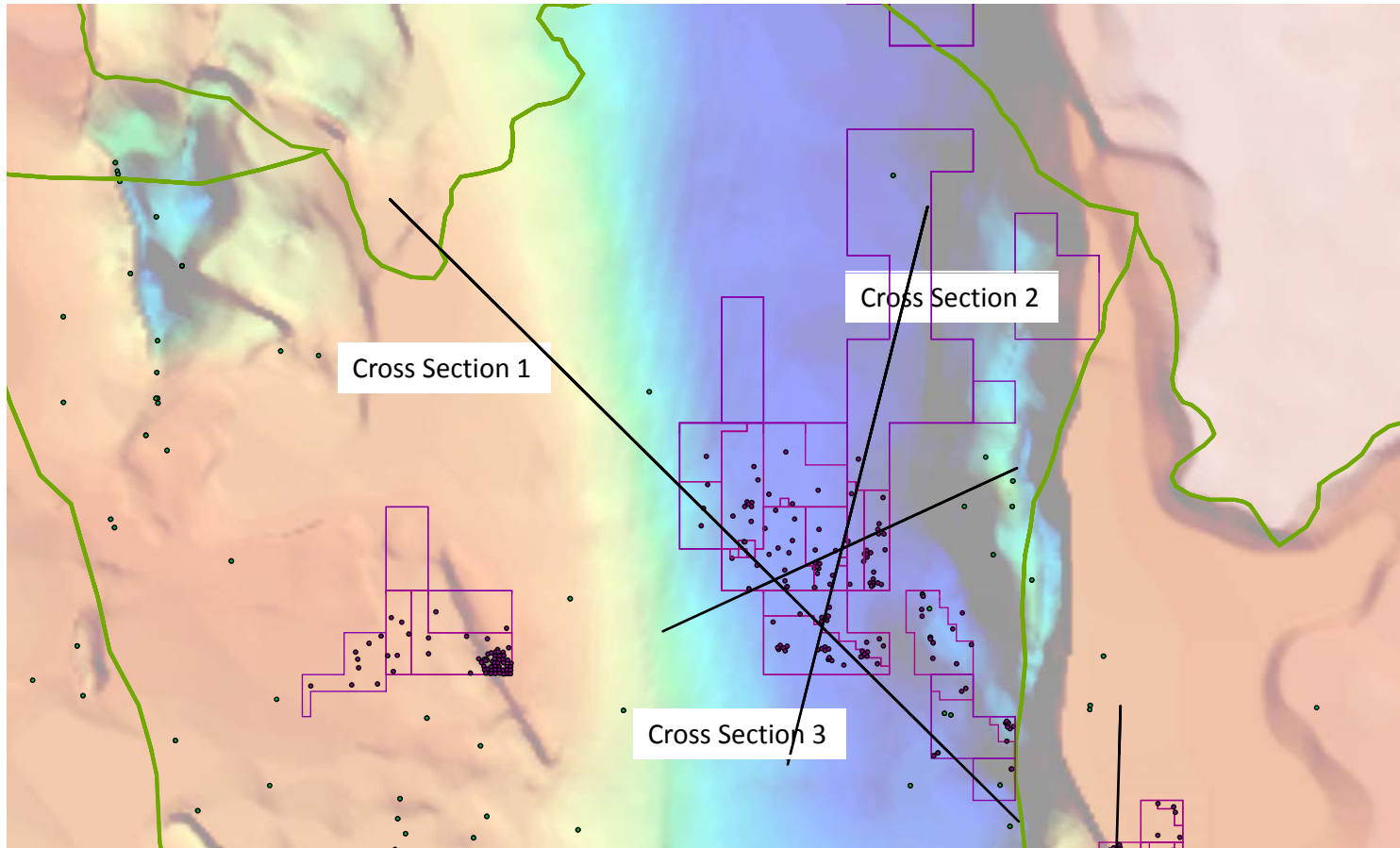


## Introduction

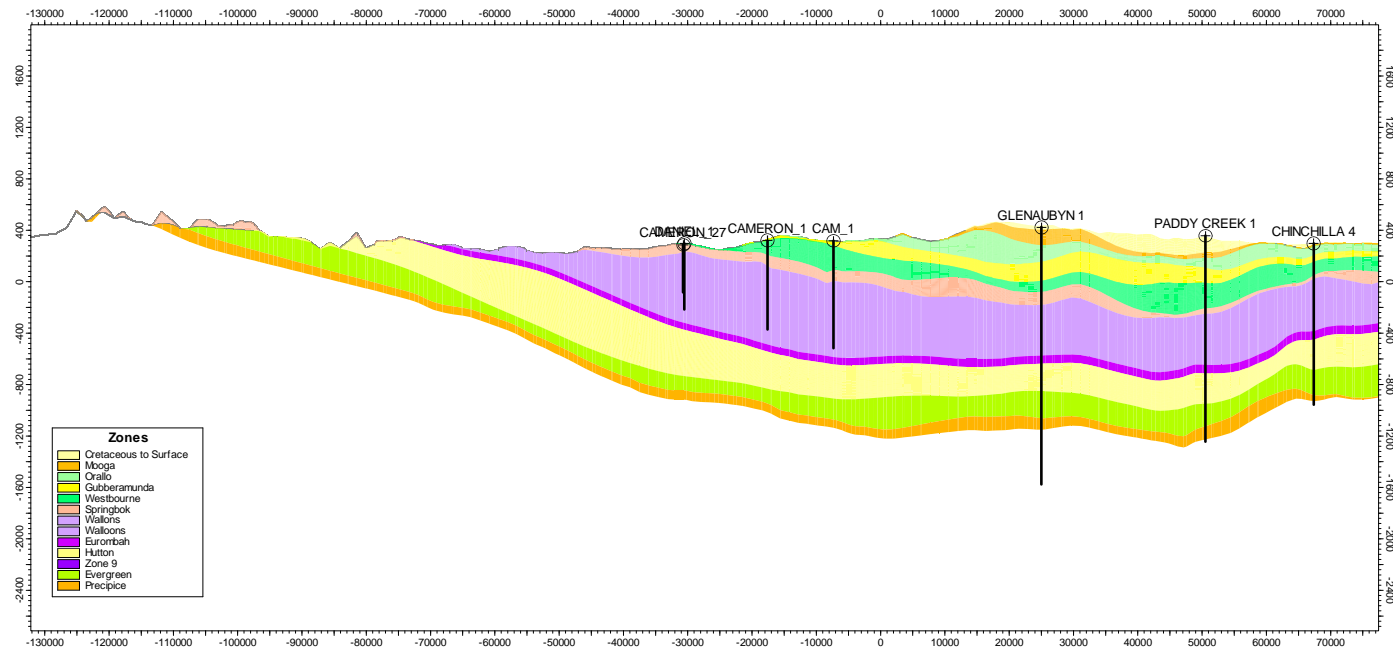
Geological cross-sections have been developed from the Surat Basin Geological Model for three lines in the Northern Gas Fields that describe the geology in the vicinity of spring complexes at Scott's Creek, Dawson River 8 and Cockatoo Creek.

Expanded sections in the near vicinity of springs are shown at Figures 31 to 33 (pages 90 to 92) of the Stage 2 CSG WMMP.

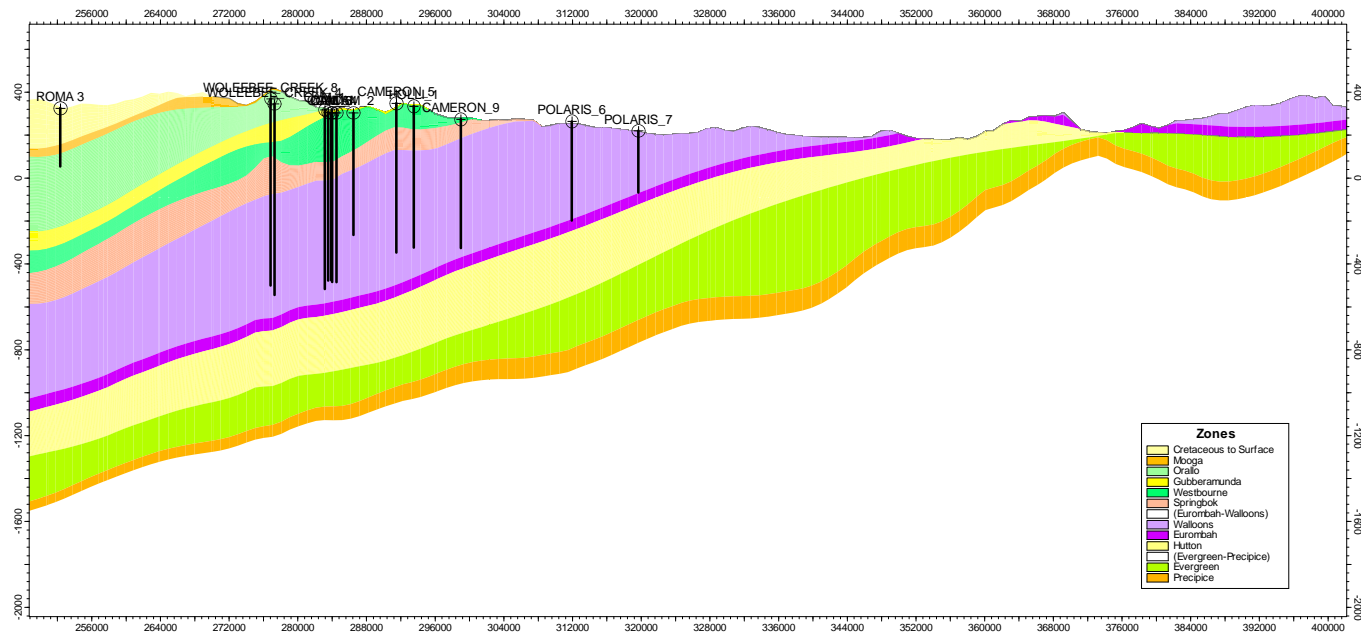
# Northern Development Area



# Cross Section 1 (NW-SE)



# Cross Section 2 (SSW-NNE)



# Cross Section 3 (WSW-ENE)

