

QGC LNG PLANT

SAFETY OF THE COMMUNITY, OUR PEOPLE AND THE OPERATION OF THE LNG PLANT, IS OUR NUMBER ONE PRIORITY. THE FACILITY HAS WORLD-CLASS SYSTEMS INCLUDING CONTROLS AND RISK MINIMISATION MEASURES THAT MEET OR EXCEED REQUIREMENTS OF QUEENSLAND'S WORK HEALTH AND SAFETY ACT 2011.

Flaring, or controlled burning of gas, is occasionally required as part of the operational and safety management systems of an LNG plant and is an environmentally responsible way of minimising emissions of greenhouse gases.

QGC works to minimise flaring, which is used during scheduled or

unplanned plant maintenance for gas that cannot otherwise be returned to storage or used. Planned maintenance typically occurs up to three times a year.

The QGC flares have been designed and are operated to meet stringent international standards, legislation and regulations.

OUR PEOPLE

About 300 people are employed to operate the LNG plant

Over 90% of them live in Gladstone.



QGC

QGC LNG PLANT



ABOUT QGC

The Shell-operated QGC venture is located in Queensland in eastern Australia. We are one of Australia's leading natural gas explorers and producers, focused on developing Queensland's world-class onshore gas reserves for supply to the domestic market and international customers.

We operate an 8.5mtpa LNG plant on Curtis Island near Gladstone, and natural gas operations, which include wells, compression stations

and processing plants, in Queensland's Surat Basin.

Shell is the operator and majority interest holder in the QGC venture. Our partners in the

LNG plant on Curtis Island are CNOOC (50% equity in Train 1) and Tokyo Gas (2.5% equity in Train 2).

CONTACT DETAILS

Please contact QGC for more information.
1800 030 443 (toll-free)

QGC Pty Limited
275 George St
Brisbane QLD 4000, Australia

ABOUT QGC'S LNG PLANT

Natural gas, the cleanest-burning hydrocarbon, is a major source of energy. Many energy-hungry places are located far from gas fields, making pipelines too impractical or costly to build. We cool natural gas to make a liquid, shrinking its volume for easier, safer storage and shipping overseas. QGC has supplied the domestic market since 2006 and supplies 30% of Queensland's domestic gas demand.

Shell's QGC venture operates a liquefied natural gas (LNG) plant on Curtis Island, which is about six kilometres north of the city of Gladstone on Queensland's Capricorn Coast.

The plant is supported by QGC's commitments to programs that protect and preserve the Great Barrier Reef and Gladstone Harbour for the benefit of local flora and fauna and recreational and commercial boating.

QUICK FACTS

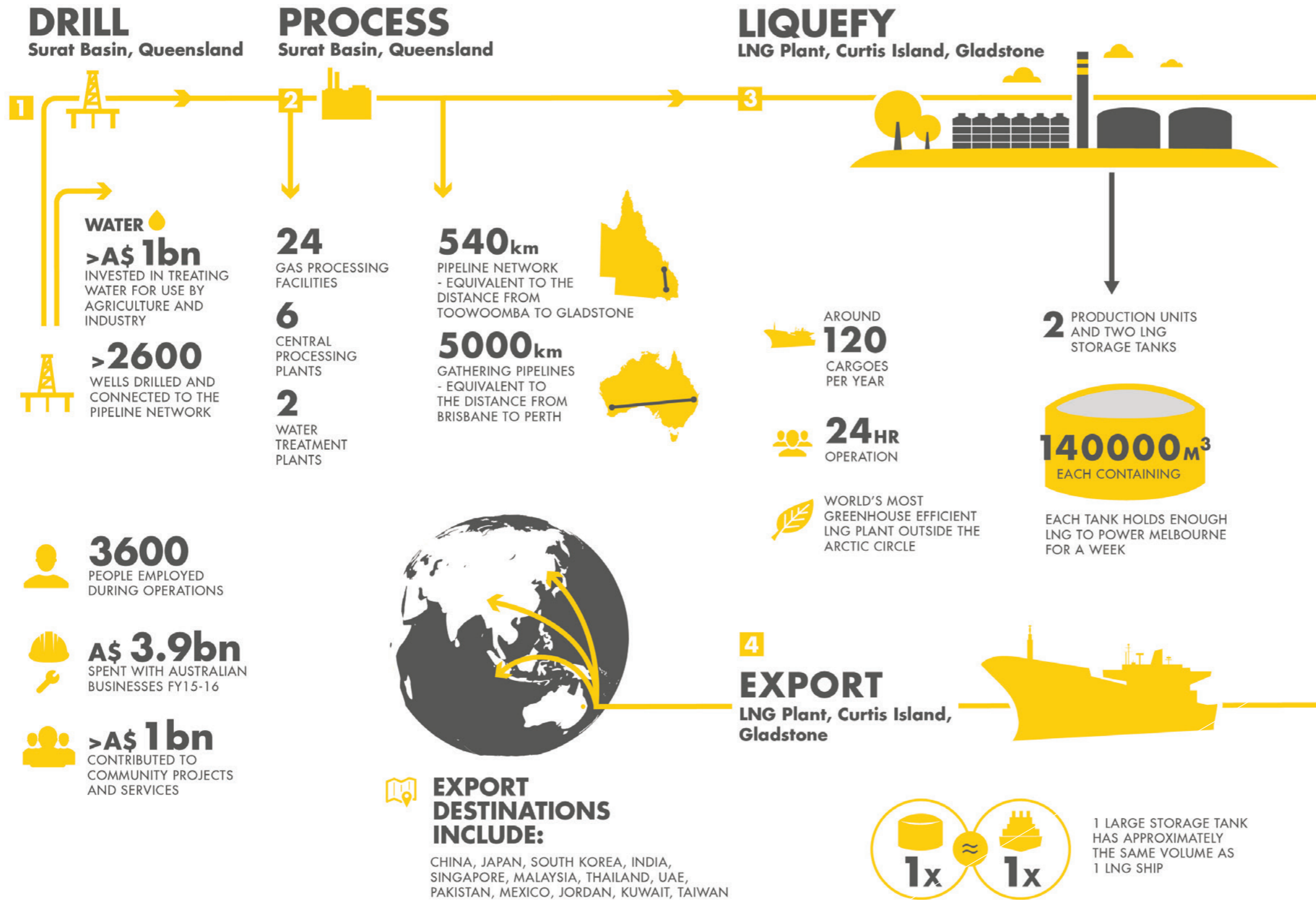
The LNG plant site covers 270 hectares, or about 1% of Curtis Island

Construction began in 2010 and first LNG was produced in 2014

LNG from our plant is exported to more than 11 countries in Asia and the Middle East.

Two production units, each of 4.25mtpa capacity, and two storage tanks each containing 140,000m³ of LNG

PROCESSING GAS TO LIQUEFIED NATURAL GAS (LNG)



AIR QUALITY

Independent monitoring shows Gladstone's air-quality meets global standards for clean air.

Community members can access Gladstone air quality data at www.ehp.qld.gov.au/air/data/search.

Monitoring shows that flaring at the plant is not affecting overall air quality in Gladstone.

Emissions from the plant are reported to the Federal Department of Environment and Energy, which publishes the data annually.

QUICK FACTS

Natural gas and LNG are non-toxic

A three-stage cooling process is used to transform natural gas, from the Surat Basin, to LNG

Natural gas is cooled to -162°C. This reduces it to 1/600th of its original volume, making it economical to transport by ship

Around 120 cargoes are exported per year